

## Who will benefit from this project?

### Individuals with:

- ⇒ Multiple Sclerosis
- ⇒ Brain Injury
- ⇒ Muscle Injury or Disease
- ⇒ Nerve Injury or Disease
- ⇒ Blind/Visual Impairment
- ⇒ Deaf/Hearing Impairment
- ⇒ Post-polio Syndrome
- ⇒ Spinal Cord Injury
- ⇒ Cerebral Palsy
- ⇒ Aging population
- ⇒ Arthritic Conditions
- ⇒ Heart Conditions

### Professionals:

- ⇒ Builders
- ⇒ Contractors
- ⇒ Insurance claim adjustors
- ⇒ Worker Compensation Insurance carriers
- ⇒ Personal Caregivers
- ⇒ Rehabilitation Counselors
- ⇒ County Case Managers paying for home modifications
- ⇒ Medical providers
- ⇒ Attorneys

### Others:

- ⇒ Students with disabilities for hands-on skill training
- ⇒ Non-profits and local social organizations in need of meeting space
- ⇒ Families planning for their future

Estimate of individuals that will benefit annually: 1000

## Board of Directors

Wayne Geurink, President

Jennifer Fasula, Vice President

Harry Krumrie, Treasurer

Pat Peckham, Secretary

Joe Mielczarek

Annaluna Karkar

Mark Seidl

Roger Plamann

Mary Salsieder

## HELP BUILD THIS SHOWCASE MODEL ACCESSIBLE HOUSE

We need cash and in-kind contributions

## CONTACTS

## Chairs & Cares

Contact: Wayne Geurink

Phone: 715-842-9120

Email: [wgeurink@charter.net](mailto:wgeurink@charter.net)

## Midstate Independent Living Consultants, Inc.

Contact: Jennifer Fasula

Phone: 715-344-4210 V/TTY

Email: [jfasula@milc-inc.org](mailto:jfasula@milc-inc.org)

## Choices for Independent Living



## Introducing the Model Accessible Home & Office Project



“Enabling people to live independently in society”

In collaboration with:



“Working for persons with disabilities towards empowerment to make informed choices”

**Chairs & Cares and Midstate Independent Living Consultants (MILC) are proud to announce the development and construction of Central Wisconsin's only Model Accessible Home and Offices.**

**According to the 2000 Census there are approximately 110,000 individuals with disabilities in the counties bordering Marathon County.**

**There are an estimated 33,000 individuals with disabilities and senior citizens living in Marathon County.**

**In the state of Wisconsin 2000 Census indicates approximately 1.5 million individuals over age 65 and living with a disability.**

**The house will provide:**

- ⇒ **Innovative ways to showcase adaptive equipment**
- ⇒ **Technical solutions**
- ⇒ **Building modification information**
- ⇒ **Options to reduce safety concern in the home**
- ⇒ **Low cost enhancements to maintain independence**

**Features of the house:**

- ⇒ **2 floors (2,400 sq. ft each)**
- ⇒ **3 car garage**
- ⇒ **Accessible bedrooms, bathrooms, kitchen, living room, exercise room and meeting room designs**
- ⇒ **Safe room with eight-hour rating for fire, also safe for extreme wind**
- ⇒ **Upstairs bedrooms with two hour rating for fire**
- ⇒ **Residential elevator and stair lift**
- ⇒ **Future plans involve a virtual online tour**
- ⇒ **Resource Library**

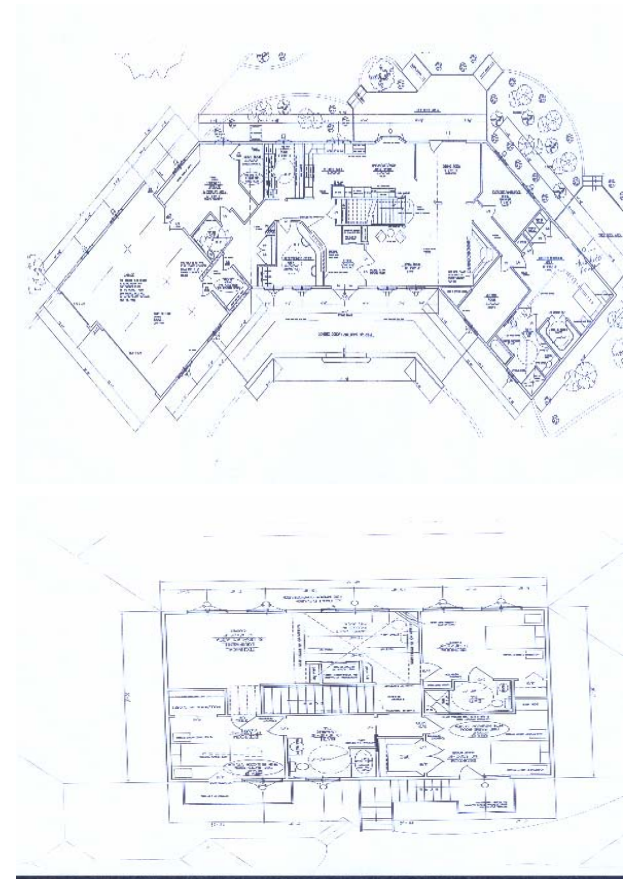
**The Model Accessible Home and Offices will promote through example, education and demonstration that physical limitations of varying degrees whether due to accident, illness, infirmities or other cause need not be an insurmountable disability, particularly in one's own home.**

**The overall direction of the model home will be maintained by Chairs & Cares, Inc. MILC will dedicate staff who are RESNA-certified to provide on site demonstration and tours of the home. MILC will also be responsible for coordinating all requests for meeting space and maintaining up-to-date resources on site.**

**Chairs & Cares Model Accessible House, Inc. is a 501(c)3 organization that offers a peer support group for individuals with spinal cord injuries. This group has combined their experiences of building their own accessible homes with their dream to see a Model Accessible Home built in Central Wisconsin for hands on demonstration and tours for all wanting to understand accessible design and technology.**

**MILC is a public non-profit agency serving persons with disabilities regardless of age, disability or income who reside in Adams, Florence, Forest, Langlade, Lincoln, Marathon, Oneida, Portage, Taylor, Vilas and Wood counties. Services offered include:**

**Information & Referral  
Advocacy  
Independent Living Skills Training  
Peer Support Program  
Employment Readiness Services  
Assistive Technology Assessment  
Architectural Accessibility Consultation  
Benefits Counseling  
Recreational training clinics  
Home Purchase counseling**



## **Choices for Independent Living**

**Estimated cost: 1.2 million dollars**

**Estimated in-kind support: \$600,000 — \$800,000**

**Construction will begin in Spring/Summer 2006 and conclude in late fall 2006. Fresh Start students will participate.**

**Plans are to feature in the 2007 parade of homes.**

**Maintenance will be provided through an endowment fund, annual income and future donations.**